



77-1/2" x 92-1/2"

# Sassy Sashing

Featured in QUILT, Oct/Nov 2013

Bali Batiks by Hoffman California  
Fabrics, [www.hoffmanfabrics.com](http://www.hoffmanfabrics.com)

GET THE KIT!!

Fabric for the quilt top and binding is \$124.99 + \$12.35 s&h while supplies last. Contact Thread Bear Fabrics: 770-781-0001 or [www.threadbearfabrics.com](http://www.threadbearfabrics.com)

## Materials:

2 yards of a dark cream batik  
1-1/8 yards of a dark green batik  
2-1/4 yards of a light cream batik  
1-1/2 yards of a dark red batik  
5/8 yard each of a gold batik and a wine/purple batik  
3/4 yard of a wine/rust batik  
2-1/2 yards of a dark wine leaf batik, includes binding  
5-3/4 yards of backing fabric  
85" x 100" piece of Fairfield Nature-fil Bamboo/cotton blend batting  
Template plastic  
*Optional: Clover 3/8" bias maker*

## Cutting:

From the dark cream batik:  
(49) 3-1/2" x 12-1/2" rectangles  
(120) 1-1/4" squares

From the dark green batik:  
(2) 11" x 42" strips  
(30) 3-1/2" squares

From the light cream batik:  
(80) 3-1/2" squares  
(80) 3-1/2" x 6-1/2" rectangles

From the dark red batik:  
(160) 3-1/2" squares

From the gold batik:  
(40) 3-7/8" squares, then cut in half diagonally once to make 80 triangles

From the wine/purple batik:  
(20) 4-3/4" squares

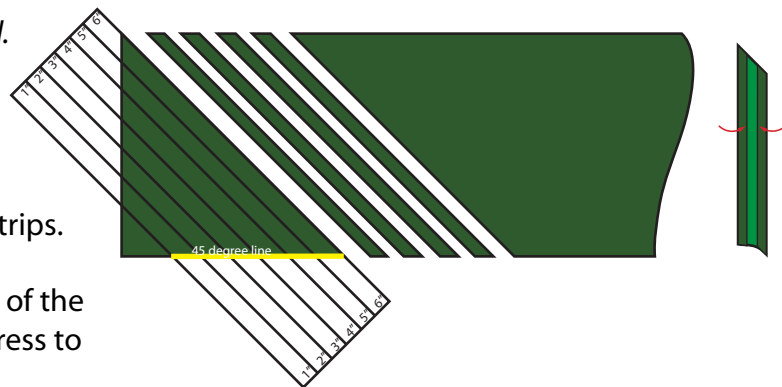
From the wine/rust batik:  
(8) 2-1/2" x 42" strips

From the dark wine leaf batik:  
(2) 5-3/4" x 78" strips, cut lengthwise  
(2) 5-3/4" x 82-1/2" strips, cut lengthwise  
(5) 2-1/4" x 85" strips, cut lengthwise, for binding

# Preparation:

Note: Use a 1/4" seam allowance unless otherwise stated.

Align the 45° line on a cutting ruler with the bottom edge of each 11" x 42" dark green batik strip and trim the left corner as shown. Cut the remaining sections into 3/4" wide strips for a total of (49) 3/4" x 15" bias strips.



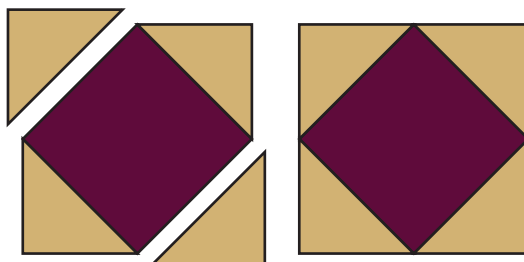
Use the Clover 3/8" bias maker (optional) or fold both of the long edges of each bias strip to the wrong side and press to make a 3/8" wide bias strip.

# Sewing:

## Making the Block

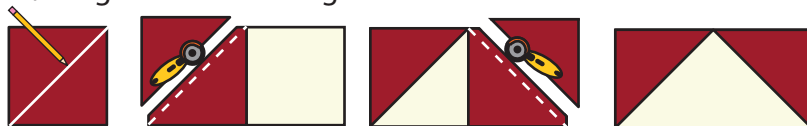
1. Stitch 2 gold triangles to opposite sides of (1) 4-3/4" wine/purple square.

2. Sew 2 gold triangles to the remaining sides of the square to make the center square-in-a-square unit.



3. Draw a diagonal line on the wrong side of (160) 3-1/2" dark red squares.

4. Place a marked square on the end of (1) 3-1/2" x 6-1/2" light cream rectangle as shown. Sew on the drawn line. Trim 1/4" beyond the drawn line and press the corner out.

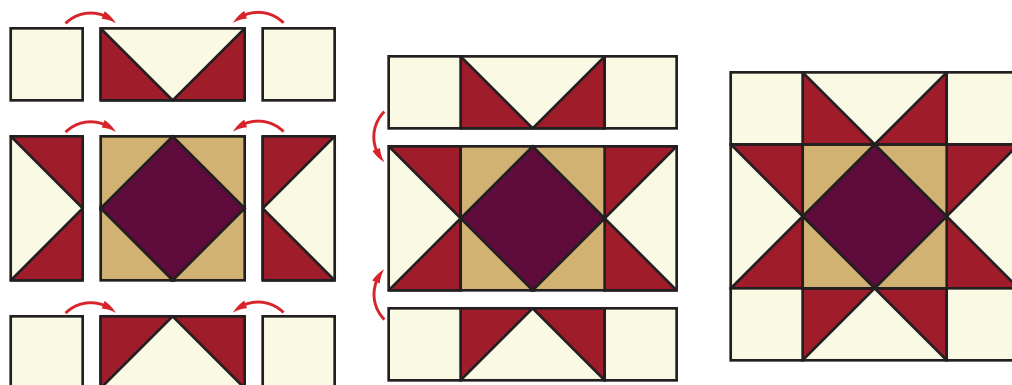


5. Place a second marked square on the opposite end of the rectangle as shown. Sew on the drawn line. Trim 1/4" beyond the drawn line and press the corner out to make a flying geese unit. (Make 80)

6. Sew 2 flying geese units to opposite sides of 1 center square-in-a-square unit as shown to make a middle row.

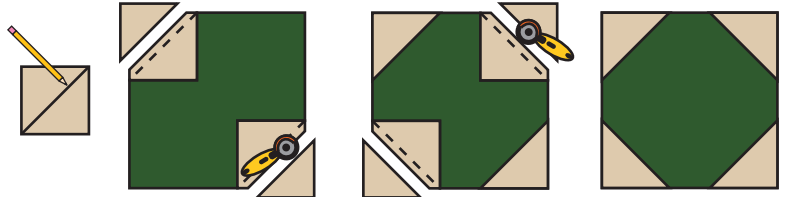
7. Stitch a flying geese unit between (2) 3-1/2" light cream squares to make a top/bottom row. (Make 2)

8. Sew the middle row between 2 top/bottom rows as shown to complete a block. (Make 20 blocks.)



## Making the Cornerstones and Sashing

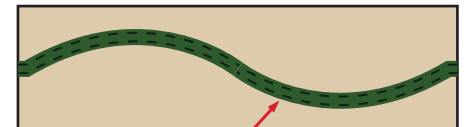
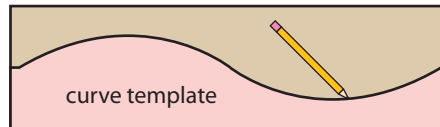
1. Draw a diagonal line on the wrong side of (120) 1-1/4" dark cream squares.



2. Place 2 marked squares on opposite corners of (1) 3-1/2" dark green square as shown. Sew on the drawn lines. Trim 1/4" beyond the drawn lines and press the corners out.

3. Place 2 marked squares on the remaining corners of the dark green square as shown. Sew on the drawn lines. Trim 1/4" beyond the drawn lines and press the corners out to make a cornerstone square. (Make 30)

4. Trace the sashing curve template to the right side of (49) 3-1/2" x 12-1/2" dark cream rectangles.



5. Pin (1) 3/8" wide dark green bias strip centered on the curved line of the rectangle. Edgestitch or use a small zigzag stitch along both sides of the bias strip to secure. Make 49 sashing rectangles.

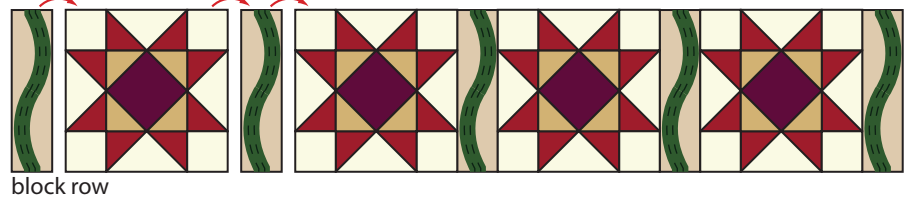
## Assembling the Quilt

1. Sew 5 sashing rectangles, alternating with 4 blocks to make a block row. (Make 5)



2. Sew 5 cornerstone squares, alternating with 4 sashing rectangles to make a sashing row. (Make 6)

3. Stitch the 6 sashing rows, alternating with the 5 block rows to complete the quilt top.

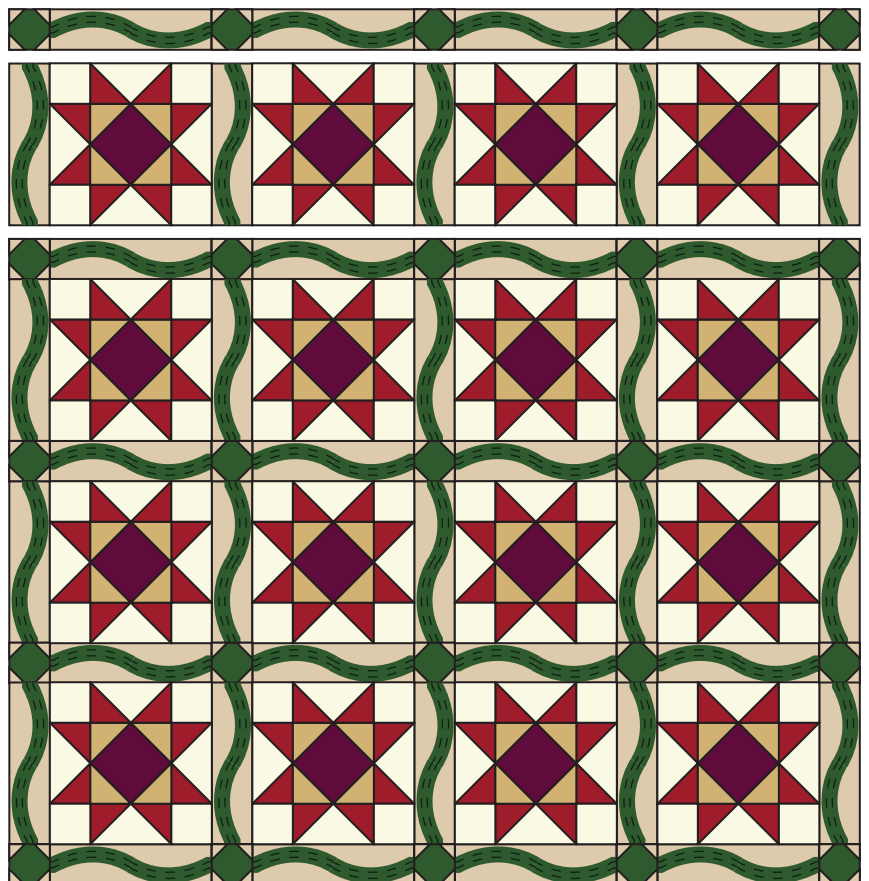


## Borders

1. Stitch the (8) 2-1/2" x 42" wine/rust strips together to make a long strip. Crosscut the long strip into (2) 78-1/2" strips and (2) 67-1/2" strips.

2. Sew the 78-1/2" strips to the sides of the quilt. Sew the 67-1/2" strips to the top and bottom of the quilt.

3. Stitch the (2) 5-3/4" x 82-1/2" dark wine leaf strips to the sides of the quilt. Sew the (2) 5-3/4" x 78" dark wine leaf strips to the top and bottom of the quilt.



Assembling the quilt

## Finishing

Refer to the General Directions for backing, quilting, and binding; use the 2-1/4" x 85" dark wine leaf strips to bind the quilt.

