

Scrappy Log Cabin

Aug/Sept 2007 issue of QUILT Magazine

Quilt maker: Cookie Capotosto



(94-1/2" square)

Materials You Will Need:

- 5 yards total of assorted light prints
- 5 yards total of assorted dark prints
- 1/2 yard total of assorted red prints
- 1-1/4 yard black print, for the border and binding
- 8-1/2 yards of backing fabric
- 99" square of batting

Cutting Directions:

From the light prints, cut a total of:
(100) 2" x 42" strips

From the dark prints, cut a total of:
(100) 2" x 42" strips

From the red prints, cut a total of:
(84) 2" squares

From all the prints, cut a total of:
(240) 2" x 5" strips, for the border (set aside)

From the black print:
(9) 1-1/4" x 42" strips, for the inner border
(10) 2-1/4" x 42" strips, for the binding

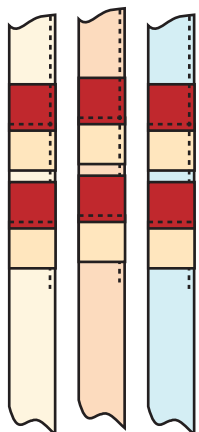
Sewing Directions: *(Seam allowance is 1/4" unless stated otherwise)*

1. Preparation

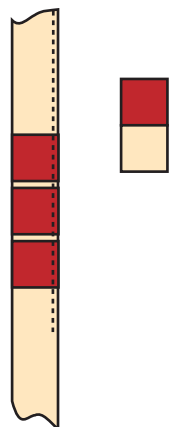
Place all your light 2" x 42" strips in a basket and mix well. Place it on the right side of your sewing chair. Place all your dark 2" x 42" strips in a basket and mix well. Place it on the left side of your sewing chair.

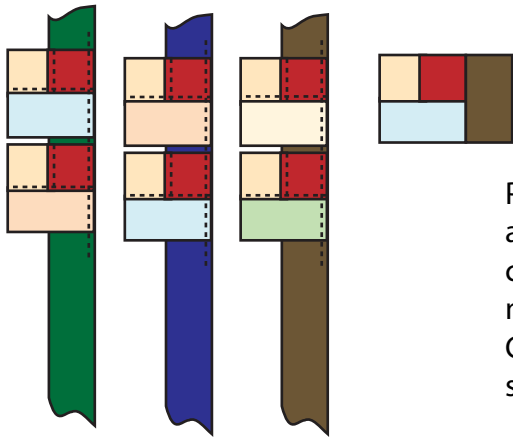
2. Sewing

Start with (4) 2" red squares; pull a 2" x 42" light print strip from the basket. Sew the red print squares to the light print strip, right sides together and abutting red squares as you sew. Trim between the squares and press toward the red. Toss the leftover strip back into the light strip basket. In the same manner, continue to sew red print squares, four at a time to a new light print strip, trim and press toward the red, and toss the leftover strip back into the basket. Continue sewing until all the red print squares have been used up.



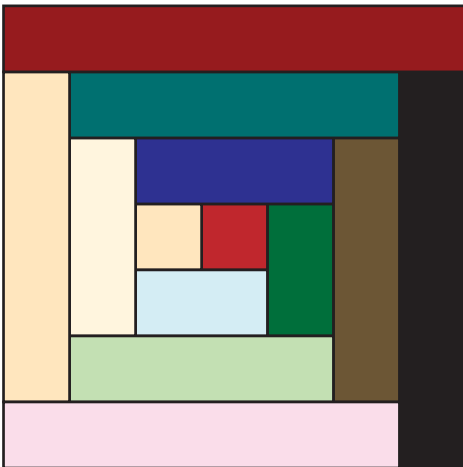
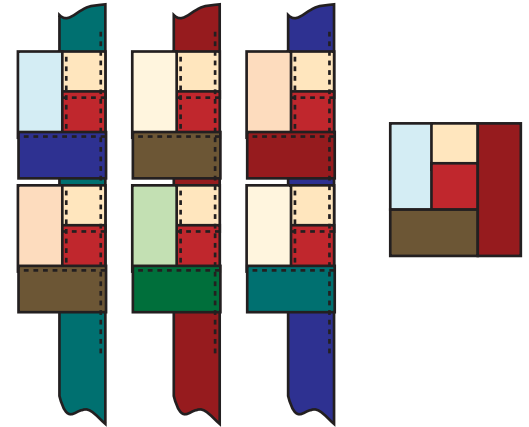
Place the pieced unit, right sides together, on a light print strip. In an assembly line manner, sew and abut additional units, only stitching a couple units before changing the light print strip. Continue in this manner until all the units are stitched to a variety of light print strips. Cut apart and press toward the red square. Toss the leftover strips back into the appropriate basket.





Place the pieced unit, right sides together, on a dark print strip. In an assembly line manner, sew and abut additional units, only stitching a couple of units before changing the dark print strip. Continue in this manner until all the units are stitched to a variety of dark print strips. Cut apart and press toward the red square. Toss the leftover dark print strips back into the appropriate basket.

Place the pieced unit, right sides together, on a dark print strip. In an assembly line manner, sew and abut additional units, only stitching a couple of units before changing the dark print strip. Continue in this manner until all the units are stitched to a variety of dark print strips. Cut apart and press toward the red square. Toss the leftover dark print strips back into the appropriate basket.



Place the pieced unit, right sides together, on a light print strip. In the same manner as before, sew and abut additional units, making sure you frequently change your light print strips. Continue to construct your Log Cabin block, adding a round of (2) light print strips to the same sides of all the units and then a round of (2) dark print strips to the same sides of all the units. Stop the construction of the block when you have 3 rows of light prints and 3 rows of dark print strips. Your block should measure 11" unfinished.

Referring to the quilt photo, lay out your blocks in 8 rows of 8. Stitch your blocks into rows and join the rows.

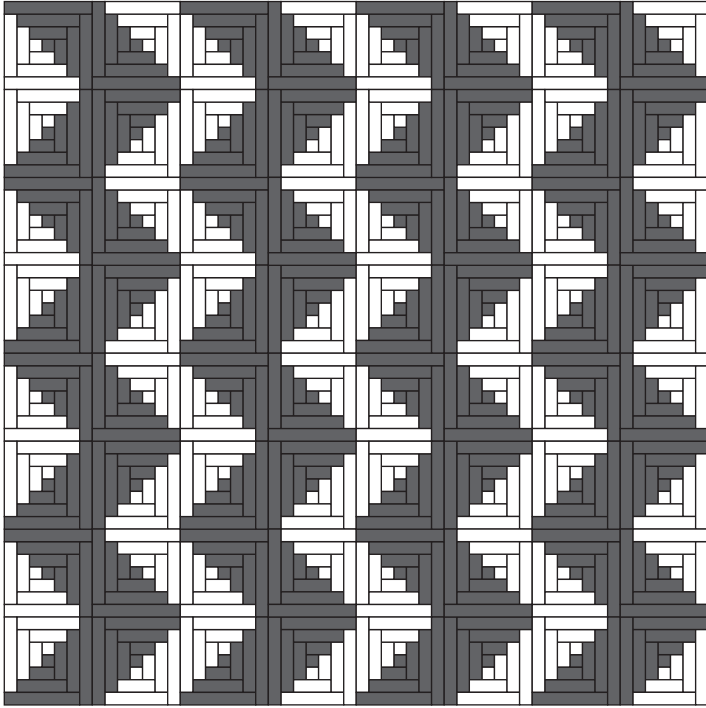
Border 1

Sew the short ends of the (9) 1-1/4" x 42" black strips together to make a long strip. Crosscut this strip into (2) 84" strips and (2) 86" strips. Sew the 84" strips to the sides of the quilt. Sew the 86" strips to the top and bottom of the quilt.

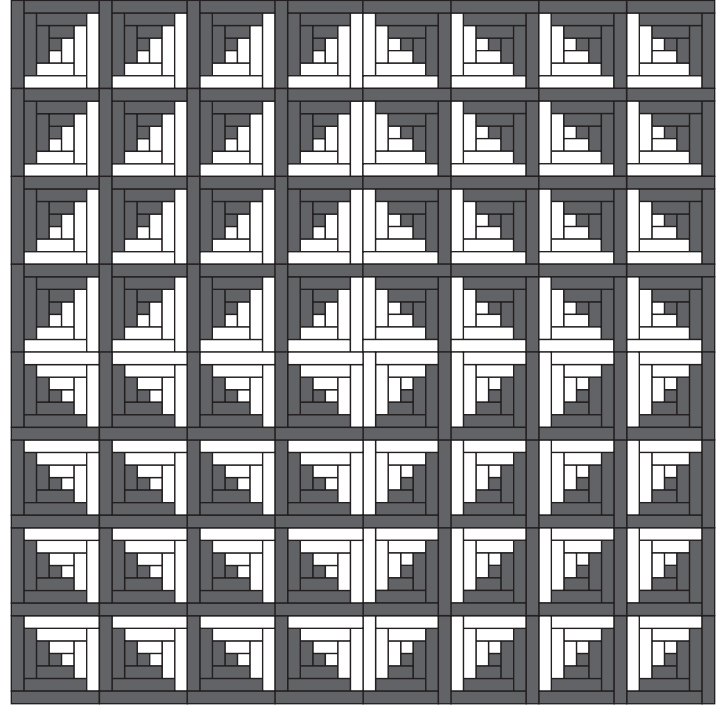
Border 2

Stitch (57) 2" x 5" strips together to make a short pieced border. (Make 2) Stitch (63) 2" x 5" strips together to make a long pieced border. (Make 2) Sew the (2) short pieced border strips to the sides of the quilt. Sew the (2) long pieced border strips to the top and bottom of the quilt.

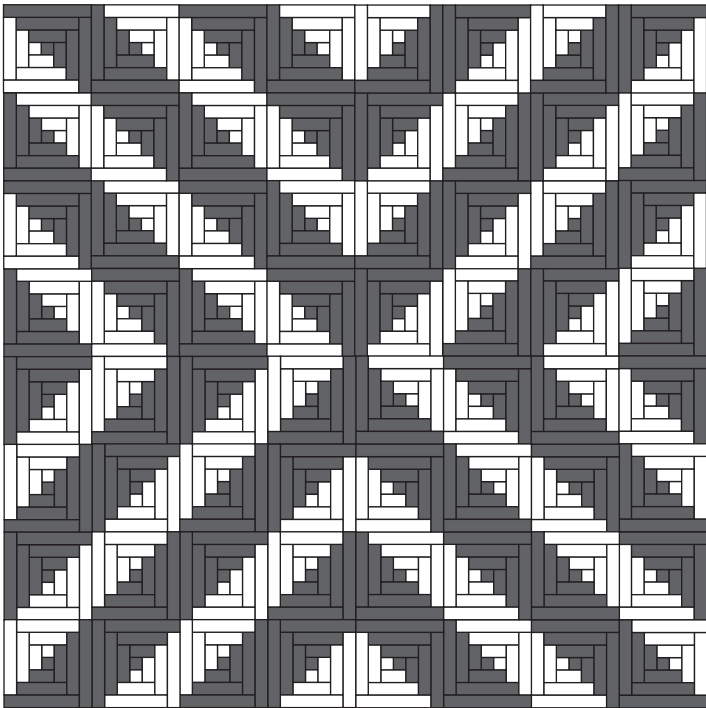
Quilt as desired. Use the (10) 2-1/4" x 42" black strips to bind the quilt.



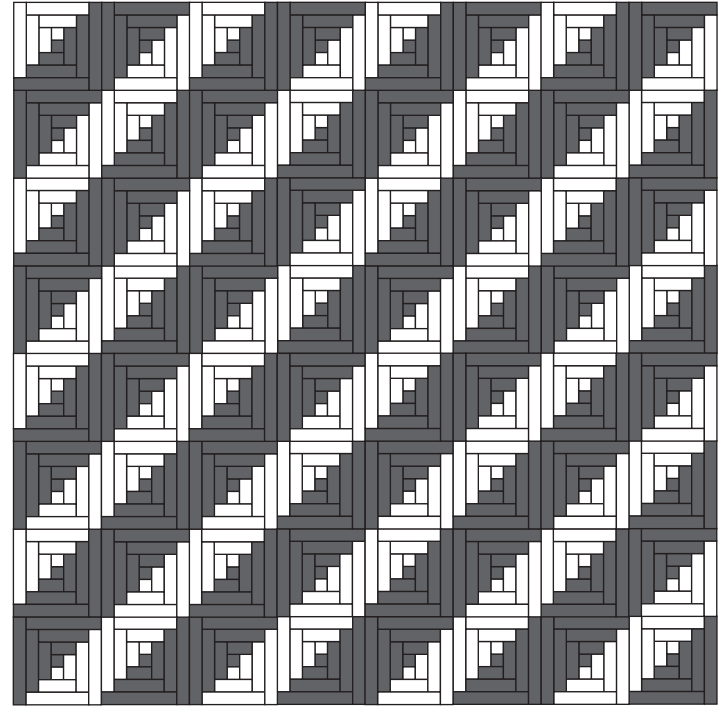
Variation #1 - Streak of Lightning



Variation #2 - Barn Raising



Variation #3 - X-Cross



Variation #4 - Fields and Furrows