

# Sewing Organizers

"Neat as a Pin" featured in  
Feb/Mar 2010 issue of QUILT Magazine

## Wall Organizer

(23-1/2" x 39-1/2")

### Materials You Will Need:

3/4 yard of a pink print  
3/8 yard of a printed stripe  
1/4 yard of a red print  
1/4 yard of a black/red print  
3/8 yard of a black tonal  
5/8 yard of a black novelty print  
3/8 yard of a white print  
5/8 yard fabric for lining  
3/4 yard fabric for backing  
5/8 yard of 45" wide heavy duty, non-woven, fusible interfacing  
38" x 44" piece of thin cotton batting  
3 large buttons



Web Bonus pattern for  
wall organizer  
by Cyndi Hershey

From the Sew It Book collection  
by Amy Barickman for Red  
Rooster Fabrics,  
[www.redroosterfabrics.com](http://www.redroosterfabrics.com)

### Cutting Directions:

From the pink print, cut:

(1) 24" x 40" rectangle for the organizer background

From the printed stripe, cut:

(1) 9-1/2" x 11-3/4" piece

(1) 8" x 20-1/2" piece

From the red print, cut:

(4) 2-1/2" x 4-1/2" pieces

(4) 1-1/2" x 6-1/2" pieces

(4) 1-1/2" x 4-1/2" pieces

From the black/red print, cut:

(4) 2-1/2" x 4-1/2" pieces

(2) 4-1/2" squares

From the black tonal, cut:

(2) 4-1/4" x 11-3/4" pieces

(1) 3" x 8" piece

(4) 3" squares

From the black novelty print, cut:

(3) 8-1/2" squares

(4) 2-1/4" strips for the binding

From the white print, cut:

(1) 4-1/4" x 11-3/4" piece

(4) 4-1/4" squares

(2) 3" x 8" pieces

From EACH of the lining fabric and the  
fusible interfacing, cut:

(1) 11-3/4" square

(1) 9-1/2" x 11-3/4" piece

(1) 8" x 20-1/2" piece

(1) 8" square

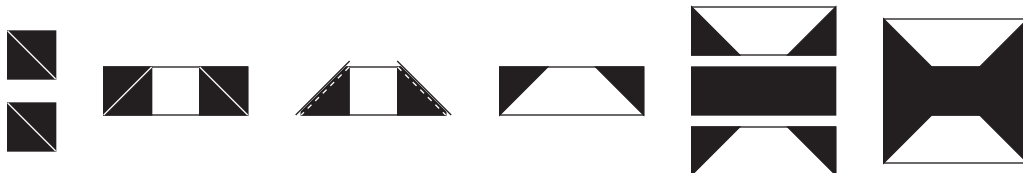
(2) 6-1/2" squares

(2) 4-1/2" x 6-1/2" pieces

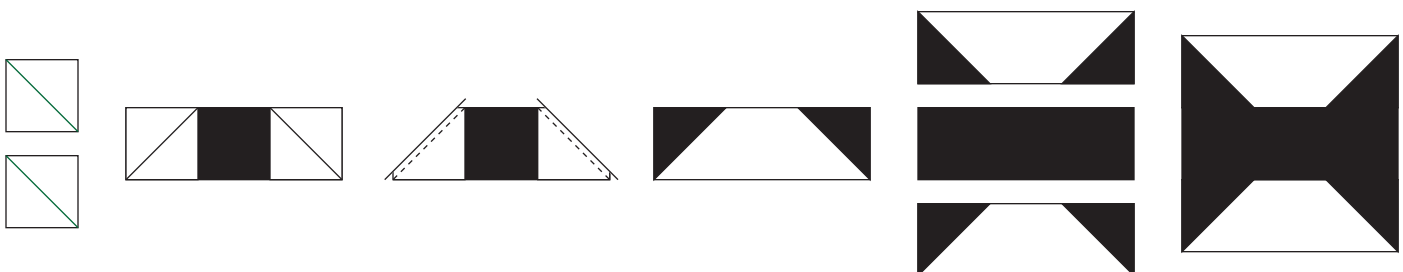
# Sewing Directions: *(Seam allowance is 1/4" unless stated otherwise)*

## Make the Pockets

1. To make the long, vertical pocket, fuse the 8" x 20-1/2" piece of interfacing to the wrong side of the 8" x 20-1/2" printed stripe piece. Sew the printed stripe unit to the 8" x 20-1/2" piece of lining fabric, right sides together. Leave an opening at the bottom for turning. Clip corners and turn the pocket unit right side out. Press, folding in the open seam allowances at the bottom so that the bottom edge is even.
2. In the same manner, make a horizontal pocket unit using the 9-1/2" x 11-3/4" printed stripe piece.
3. Sew 1-1/2" x 4-1/2" red print pieces to opposite sides of a 4-1/2" black/red print square. Stitch 1-1/2" x 6-1/2" red print pieces to the two remaining sides of the square. Repeat to make a second unit. Using these pieced squares and the 6-1/2" squares of lining fabric and fusible interfacing, make (2) pockets following the procedure from step 1.
4. Stitch a 2-1/2" x 4-1/2" black/red print piece to each long side of a 2-1/2" x 4-1/2" red print piece. Repeat to make a second unit. Using the pieced units, and the 4-1/2" x 6-1/2" pieces of lining fabric and fusible interfacing, make (2) vertical pockets following the procedure from step 1.
5. Draw a diagonal line on the wrong side of (2) 3" black tonal squares. Layer a marked square on each end of a 3" x 8" white print piece. Sew on the marked lines. Trim 1/4" beyond the seam allowances and press the black triangles to make the unit shown. Repeat to make a second unit. Sew a pieced unit to each long side of the 3" x 8" black tonal piece, noting the orientation of the triangles. Using this pieced square, the 8" square of lining fabric, and the 8" fusible interfacing square, make a pocket following the procedure from step 1. Be sure to place the bottom opening along one of the black edges of the block.



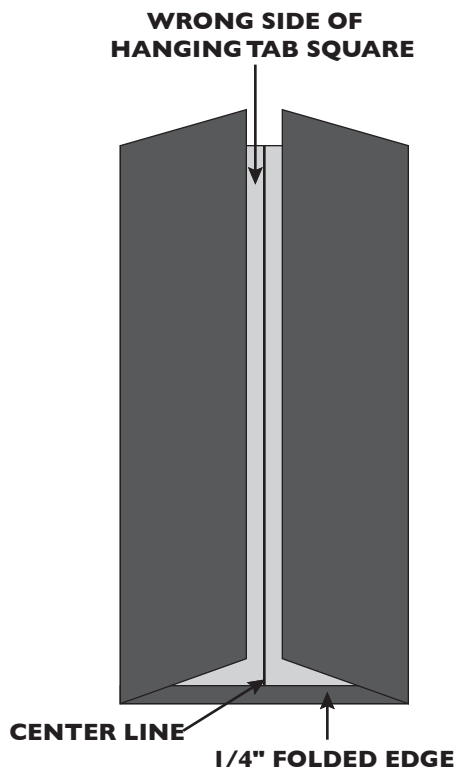
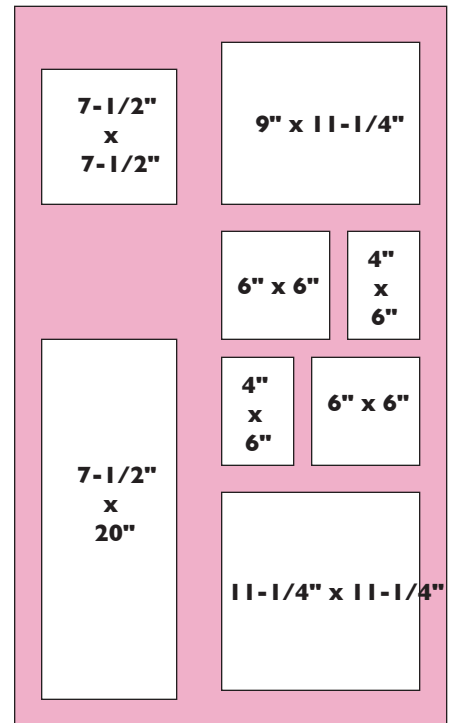
6. Draw a diagonal line on the wrong side of (2) 4-1/4" white print squares. Layer a marked square on each end of a 4-1/4" x 11-3/4" black tonal piece. Sew on the marked lines. Trim 1/4" beyond the seam allowances and press the black triangles to make the unit shown. Repeat to make a second unit. Sew a pieced unit to each long side of the 4-1/4" x 11-3/4" white print piece, noting the orientation of the triangles. Using this pieced square, the 11-3/4" square of lining fabric, and the 11-3/4" fusible interfacing square, make a pocket following the procedure from step 1. Be sure to place the bottom opening along one of the white print edges of the block.



## Assembling the Organizer

1. Layer the 24" x 40" pink print background piece on top of the batting and the wrong side of the backing fabric. Referring to the placement diagram, position the pockets on top of the background. Pin pockets in place and stitch close to the outer edge of each pocket on the bottom and both sides. Stitch through all layers: pockets, background, batting, and backing.

2. Add additional quilting to the open areas of the background as desired.



3. To make a hanging tab, turn 1/4" to wrong side along the bottom edge of an 8-1/2" black novelty print square. Press the fold. Fold the right and left sides of the square so that they meet in the center of the square, wrong sides together. Fold in half and press so there are four layers. Repeat to make a total of (3) hanging tabs.

4. Center a hanging tab on the wrong side of the organizer matching the raw edges to the raw edge of the organizer. Be sure the pressed, folded edge of the tab is left free. Place each of the remaining tabs 1-1/2" in from the right and left edges of the organizer.

5. Bind the organizer using the 2-1/4" black novelty print strips.

6. Fold hanging tabs up and hand-stitch to the binding on the wrong side of the organizer. Bring the hanging tabs to the front and stitch in place with the three large buttons.



# Sewing Tote

Web Bonus pattern for sewing tote by Kelley Walton

From the Tiny Tailor collection designed by J. Wecker Frisch for Quilting Treasures, [www.quiltingtreasures.com](http://www.quiltingtreasures.com)

## Materials You Will Need:

7/8 yard of brown spool print  
7/8 yard of cream large button print  
7/8 yard of red small button print  
1 ¼ yard of large red rickrack )  
22 inches of light/medium weight vinyl  
3/4 yard of a firm stabilizer such as Pellon®Peltex® 70  
Water soluble marker or pencil

## Cutting Directions:

From the brown spool print, cut:

- (1) 20 ½" x 40 ½" rectangle
- (1) 6 ½" x 12 ½" rectangle for inner pocket (will fold in half to make a 6" finished pocket)
- (1) 6 ½" x 8 ½" rectangle for inner pocket ( will fold in half to make a 3" x 8" finished pocket)

From the cream large button print, cut:

- (1) 20 ½" x 40 ½" rectangle
- (2) 2 ½" x 42" strips

From the red small button print, cut:

- (1) 20 ½" x 40 ½" rectangle
- (2) 2 ½" x 42" strips

From the red rickrack, cut:

- (2) 20 ½" pieces

From the vinyl, cut:

- (1) 20 ½" x 25 ½" rectangle

From the stabilizer, cut:

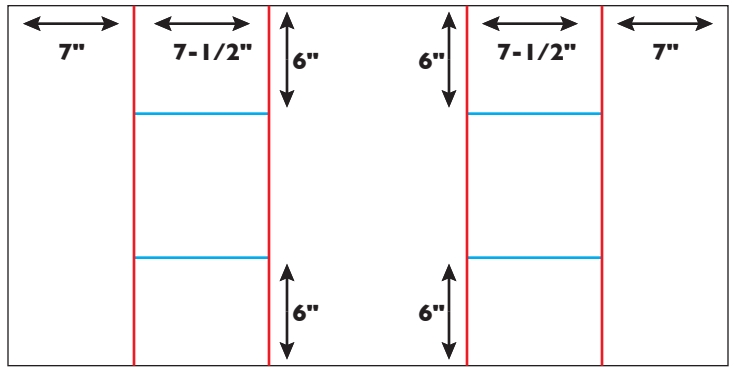
- (1) 20 ½" x 40 ½" rectangle
- (2) 2 ½" x 42 ½" strips

# Sewing Directions: *(Seam allowance is 1/4" unless stated otherwise)*

## Assembling the Outer Tote

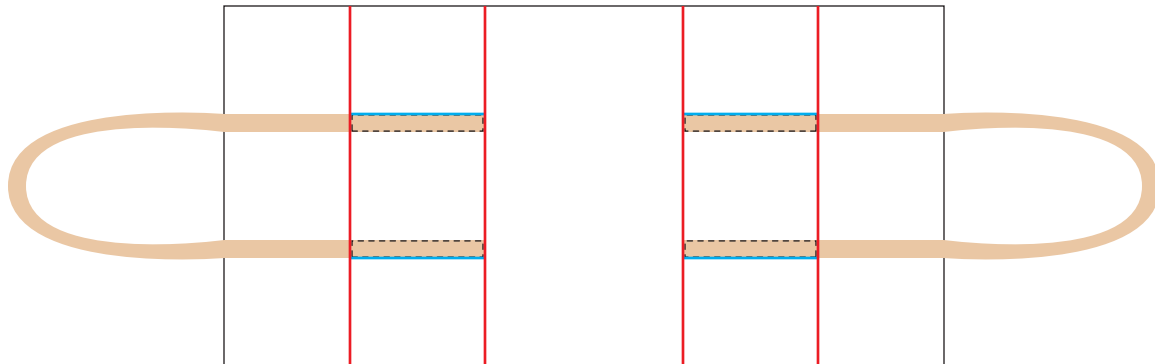
### Body

Referring to the red lines on the Marking Diagram and using the water soluble marker, mark placement lines 7-1/2" and 14-1/2" in from both the right and left edges of the 20-1/2" x 40-1/2" brown spool print rectangle. Referring to the blue lines on the diagram, make lines six inches from the top and bottom edges and between the lines already drawn.



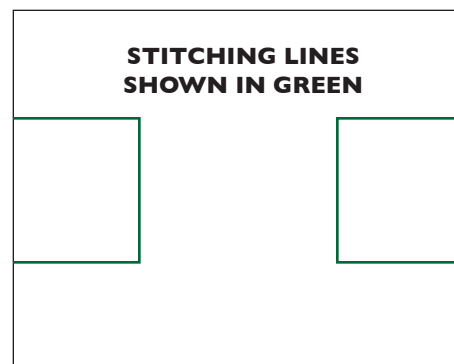
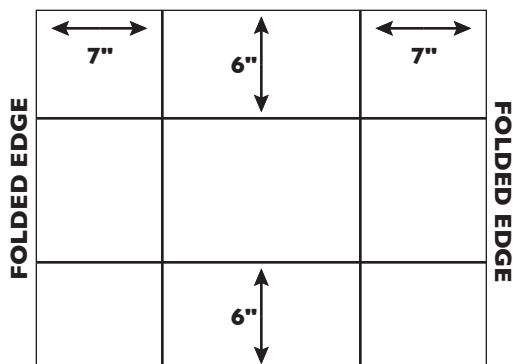
### Handles

Layer 2-1/2" x 42-1/2" red small button print and cream large button print strips, right sides together. Place this unit on top of a 2-1/2" x 42-1/2" stabilizer strip. Stitch all the way around the outside edge leaving an 8" opening in the center of one long side for turning. Clip the corners and turn the unit right side out. Press the strip, tucking in the seam allowances in the open area. Edge stitch all the way around the outer edge, closing the opening. Repeat the procedure to make a second handle. Place the outer edge of each handle on the 6" lines marked in blue on the diagram. Place the bottom edge of each handle on the 14-1/2" lines marked in red. Stitch through all layers as shown, beginning and ending each seam at the 7-1/2" point marked on the rectangle.



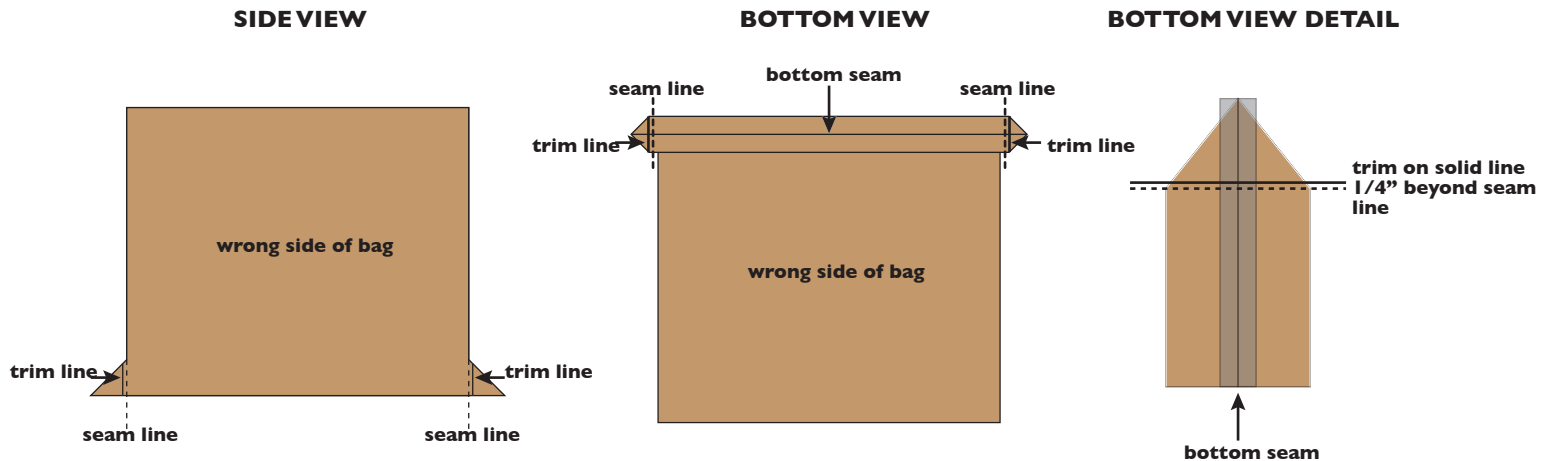
### Outer Pockets

Fold toward the wrong side and press 7-1/2" of each end of the 20-1/2" x 40-1/2" cream large button print piece. The unit is now 20-1/2" high x 25-1/2" wide. Mark lines for the side pockets 6" from the top and bottom edges. Mark lines for the center pockets 7" from the folds on the right and left sides. Insert the 20-1/2" x 25-1/2" vinyl piece inside the cream large button print rectangle fitting the ends of the vinyl piece inside the folds of the cream piece. Stitch close to the edge of each fold to hold the vinyl piece in position. To make the pocket divisions, stitch on the portions of the lines marked in green. Stitch the large rickrack to each folded edge of the cream rectangle using clear or coordinating thread.



## Assembly

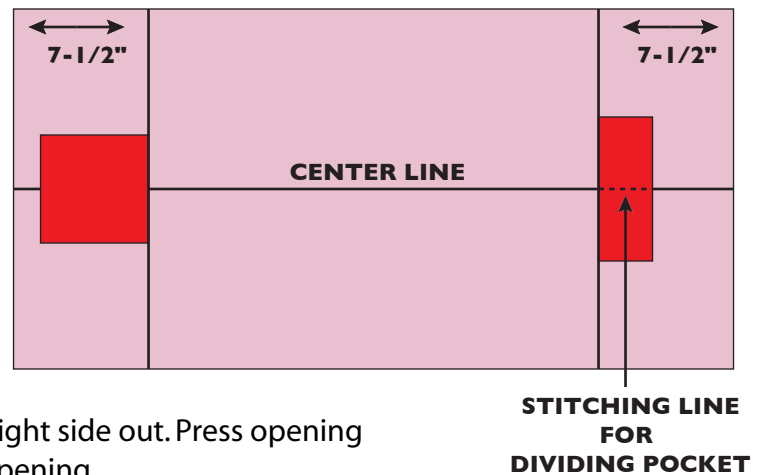
Place the 20-1/2" x 40-1/2" piece of stabilizer on a flat surface. Lay the brown spool print rectangle on top, right side up, raw edges even with the edges of the stabilizer. Lay the cream large button print unit on top, right side up, matching the folded edges to the marked lines on the brown rectangle. Pin in place. Baste the top and bottom edges of the tote to keep layers from shifting. Fold the tote in half, right sides together, matching the two folded edges of the cream unit as closely as possible. Pin and sew each side using 1/2" seam allowance. Flatten the bottom of the bag and stitch through all thicknesses as shown. Trim 1/4" beyond the seam line. Turn the bag right side out. Fold the top 1" of the tote to the wrong side and press. Hem using a hand blindstitch.



## Lining

### Make the Inner Pockets

Fold the 6-1/2" x 12-1/2" brown spool rectangle in half, right sides together to form a 6" pocket. Press well and stitch around, leaving an opening for turning. Clip corners and turn the pocket right side out. Press opening closed and edge stitch all the way around, closing the opening. Fold the 6-1/2" x 8-1/2" brown spool rectangle in half, right sides together to form a 3" x 8" pocket. Press well and stitch around, leaving an opening for turning. Clip corners and turn the pocket right side out. Press opening closed and edge stitch all the way around, closing the opening.



### Assemble the Lining

Mark a line 7-1/2" from each end of the 20-1/2" x 40-1/2" red small button print rectangle. Mark the center line on the rectangle and each pocket. Layer the pockets on top of the red rectangle matching the center lines. Place the bottom of each pocket on the marked lines 7-1/2" from the ends. Stitch around each pocket on three sides, leaving the top open. Double stitch for added strength. Stitch a line down the center of the 3" x 8" pocket to form two smaller pockets. Fold the lining in half, right sides together, and stitch down each side, using 1/2" seam allowance. Repeat the procedure from the outer tote to flatten the bottom, stitch and trim the excess. Fold over the top of the lining 1" toward the wrong side and press. Hem using a hand blindstitch.

## Finishing the Tote Bag

Place the lining inside the outer tote, wrong sides together. Pin all the way around the upper edge, matching side seams. Stitch close to the upper edge all the way around the bag. Tack the lining to the outer tote unit in each corner to keep it from shifting.