

Home & Hearth Blessings

Aprons, Table Runner and Hot Pads

Featured in the Oct/Nov 2009 issue of QUILT Magazine



(Table runner: 15" x 45";
Hot pads: 10" square)

Web Bonus pattern for
aprons, table runner and
hot pads by Judy Jennings

From the Hearth and Home
collection by Country Essentials
for Connecting Threads,
connectingthreads.com



(Adult apron: 25" x 30";
Child apron: 15" x 18")

Materials You Will Need:

1/2 yard each of a gold leaf stripe and a green dandelion print

1/3 yard each of a gold leaf/dot, a gold/cream plaid, a gold dandelion, green/cream plaid, a green leaf stripe, and a green circles/flowers print

1/4 yard each of a dark gold circles/flowers

Fat eighth each of assorted medium to dark fall prints in brown, red, green, and orange for appliqués

2 yards of a cream tonal

(4) D-rings

Black embroidery floss

Fusible web

Cutting Directions:

From the gold leaf stripe, cut:

(12) 5-1/2" squares (A)

(3) 2-1/2" x 10" pieces

From the gold leaf/dot, cut:

(8) 5-1/2" squares (B)

(6) 3-1/2" squares (B)

(3) 2-1/2" x 10" pieces

From the gold/cream plaid, cut:

(8) 5-1/2" squares (C)

(7) 3-1/2" squares (C)

(3) 2-1/2" x 10" pieces

From each of the gold dandelion (D1)
and the green/cream plaid (D2), cut:

(7) 5-1/2" squares (D1 and D2)

(3) 2-1/2" x 10" pieces

From the dark gold circles/flowers, cut:

(3) 5-1/2" squares (E)

(3) 3-1/2" squares (E)

From the green dandelion, cut:

(7) 5-1/2" squares (F)

(6) 3-1/2" squares (F)

(3) 2-1/2" x 10" pieces

From the green circles/flowers, cut:

(6) 5-1/2" squares (H)

(3) 2-1/2" x 10" pieces

From the cream tonal, cut:

(5) 5-1/2" squares (I)

(2) 10-1/2" squares

(1) 15-1/2" x 45-1/2" piece

(1) 25-1/2" x 30-1/2" piece

(1) 15-1/2" x 18-1/2" piece

From the green leaf stripe, cut:

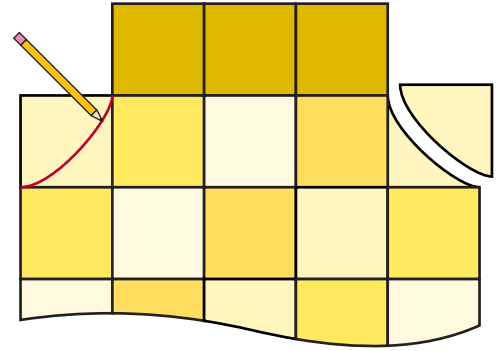
(6) 3-1/2" squares (G)

(3) 2-1/2" x 10" pieces

Sewing Directions: *(Seam allowance is 1/4" unless stated otherwise)*

1. Making the Aprons

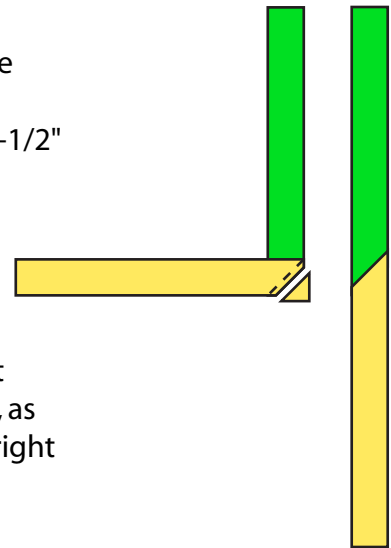
Refer to the apron photo; lay out (25) 5-1/2" various gold print squares in (5) rows of (5) squares each in a diagonal order, as shown. Sew the squares together in each row. Join the rows. Center and sew (3) 5-1/2" dark gold print squares to the top of the apron front. Using a pencil, draw a curve from the top to the sides, as shown. Cut out the curve to form the apron shape.



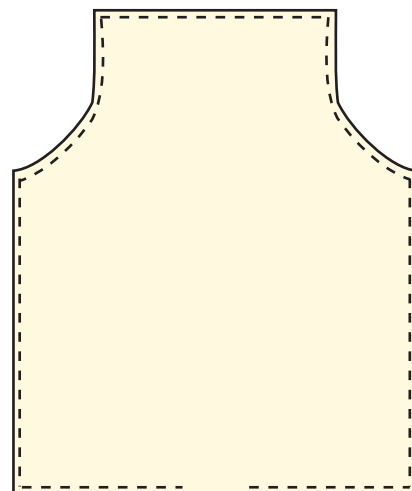
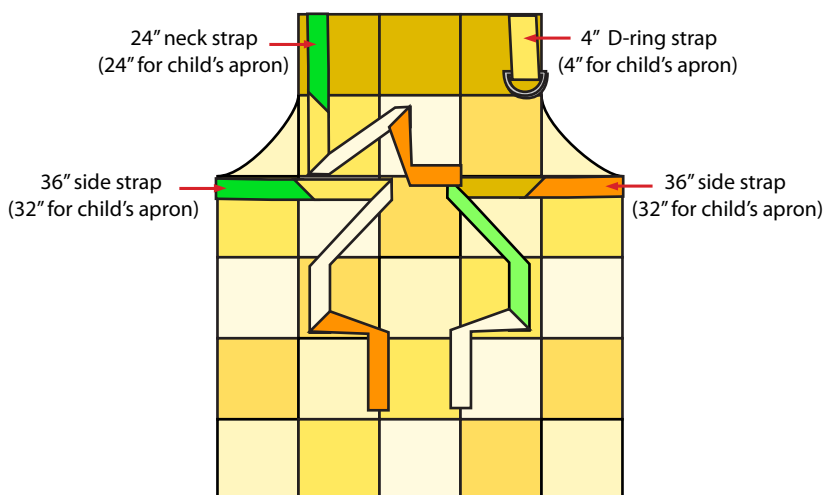
Using the apron front as a pattern, with right sides together cut a back from the 25-1/2" x 30-1/2" cream tonal piece. In the same manner, make the child's apron using (25) 3-1/2" various gold and green print squares and (3) 3-1/2" dark gold print squares. Cut a back from the 15-1/2" x 18-1/2" cream tonal piece. Following manufacturer's instructions, fuse the appliqué patterns to the front of the aprons, as shown.

Appliqué, using a blanket stitch. Using the black floss and a straight stitch, add veins to the leaves and lines to the pumpkin.

Stitch (4) 2-1/2" x 10" various print strips together on the diagonal to make a long strip. (Make 6 long strips.) Fold each long strip in half, right sides together and sew one short end and the long side. Trim the strips, as shown, to make (2) 36", (2) 32", (2) 24", and (2) 4" straps. Turn the straps right side out and press.

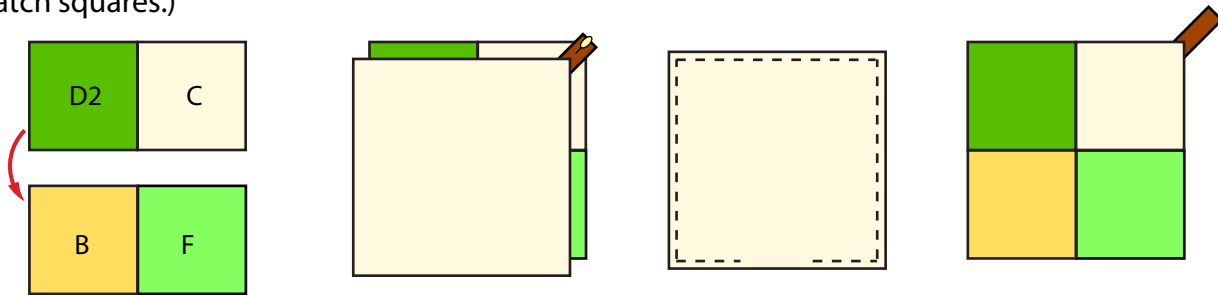


Pin each strap, as shown, to the sides and top of each apron, raw edges even. (Note: Be sure to add the D-rings to the 4" straps before sewing to the aprons.) Place the back, right sides together, on the apron front. Stitch around the outside, leaving a 6" opening on the bottom for turning. Clip corners and curves, turn right side out and press. Slipstitch the opening closed. Thread the 24" neck strap through the D-rings and adjust to fit.



2. Making the Pot Holders

Sew (1) 5-1/2" green/cream plaid square to (1) 5-1/2" gold/cream plaid square to make a 2-piece unit. Sew (1) 5-1/2" green dandelion square to (1) 5-1/2" gold leaf/dot square to make a 2-piece unit. Sew the (2) 2-piece units together, alternating the green and gold squares, to make a four-patch square. (Make 2 four-patch squares.)



Fuse the appliqué patterns to the front of the pot holders. Appliqué, using a blanket stitch. Using the black floss and a straight stitch, add lines to the pumpkin.

From a scrap of a dark fall print, cut a 1" x 4" piece for the corner loop. Fold the piece in half widthwise, wrong sides together. Sew the long side to make a tube. Turn right side out and press centering the seam on the back. Pin loop to a corner of the pot holder front with raw edges together.

Sew a 10-1/2" cream tonal square, right sides together, to each of the pot holder fronts leaving an opening for turning. Turn right side out and press. Slipstitch the openings closed.

3. Making the Table Runner

Refer to the table runner photo; lay out (27) 5-1/2" various gold and green print squares in (9) rows of (3) squares each in a diagonal order, as shown. Sew the squares together in each row. Join the rows.

I	D2	H	A	F	I	D2	H	A
D2	H	A	F	I	D2	H	A	F
H	A	F	I	D2	H	A	F	I

Following manufacturer's instructions, fuse the appliqué patterns to the front of the table runner, as shown. Appliqué, using a blanket stitch. Using the black floss and a straight stitch, add veins to the leaves and lines to the pumpkin.

Sew a 15-1/2" x 45-1/2" cream tonal piece, right sides together, to the table runner front leaving a 6" opening for turning. Turn right side out and press. Slipstitch the opening closed.