

Sugar, Spice Roll Pillow

"Sugar, Spice & Lots of Love" quilt patterned in
Winter 2009, Issue #96, of Quick Quilts



Web Bonus pattern for pillow
roll by Kelley Walton

From the Hip Hoop Hearts collection by
Ro Gregg for Northcott Monarch,
www.northcott.net

Materials You Will Need:

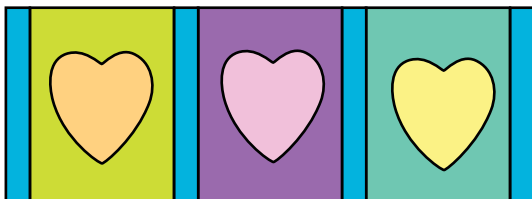
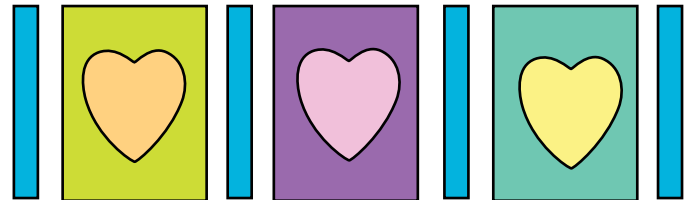
1/3 yard of a heart panel print
1/4 yard of a stripe print
1/3 yard of blue print
42" of 5/8" wide pink ribbon
14" x 5" Fairfield Softtouch Neck Roll Pillow Insert

Cutting Directions:

From the heart panel, cut:
(3) heart squares, fussy cut to center a heart motif
From the stripe, cut:
(2) 7-1/2" x 20" pieces
From the blue print, cut:
(1) 1" x 42" strip
(1) 7" x 42" strip

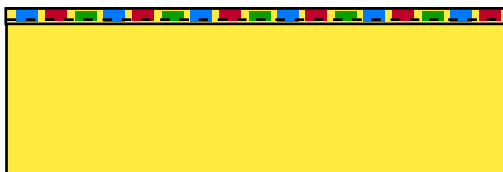
Sewing Directions: *(Seam allowance is 1/4" unless stated otherwise)*

1. Measure the length of the fussy cut heart panels and cut (4) strips to that length from the 1" x 42" blue print strip. Sew the (4) blue print strips and (3) heart panels together in alternating order.

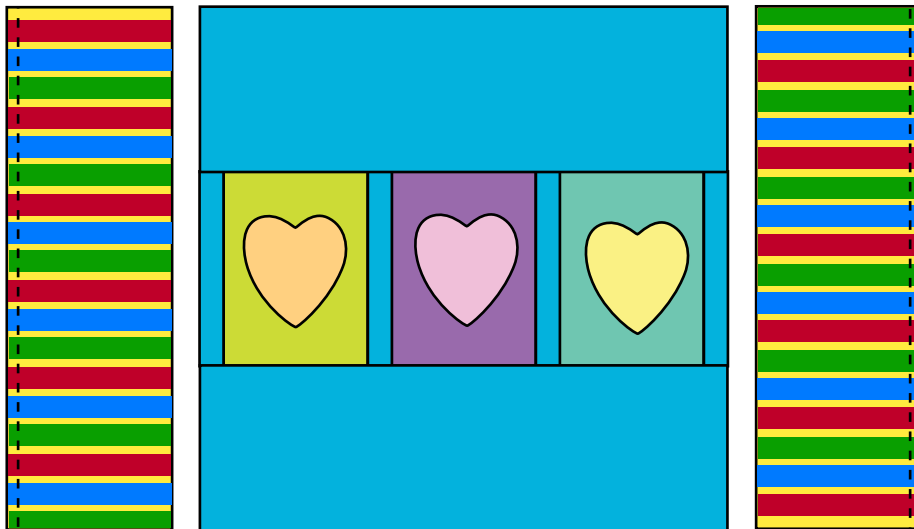


2. Measure this pieced row of hearts. (It should be approximately 14-1/2" wide.) Cut (2) pieces to that length from the 7" x 42" blue print strip (each approximately 7" x 14-1/2"). Stitch one blue print piece to the top of the row of hearts and one to the bottom.

3. Fold (1) long edge of a 7-1/2" x 20" striped piece over 1/2" and then 1/2" again to create a hem. Stitch to secure. Repeat on the other striped piece.



4. Stitch (1) striped piece, raw edges matching, to each side of the pieced unit. Note: Depending on the exact measurements of the fussy cut panels in step 1, you may need to trim either the pieced center or the striped pieces so they're the same length.



5. Fold the unit in half right sides together and stitch together lengthwise to create a tube shape.

6. Insert the neck roll pillow insert and center. Note: If pillow fabric is too loose around the pillow insert, repeat step 5 to create a smaller circumference tube.

7. Cut the pink ribbon into (2) 21" lengths. Tie each end of the pillow with ribbon.