

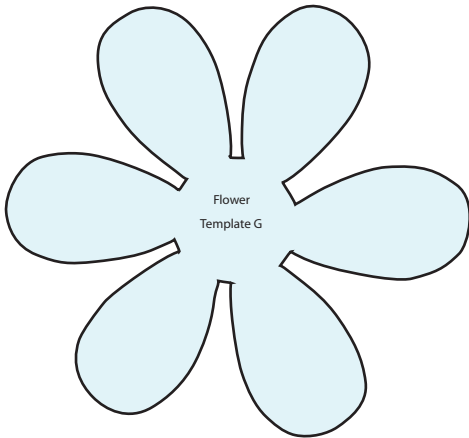
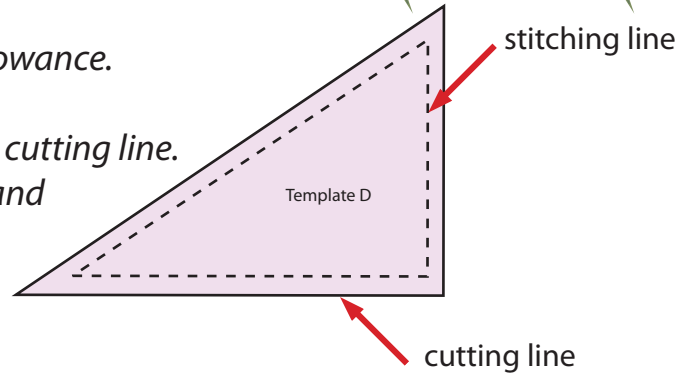


Templates and Appliqués



Template patterns are full size and include a 1/4" seam allowance.

The dashed line is the stitching line and the solid line is the cutting line. Use clear plastic over the patterns and trace both dashed and solid lines.

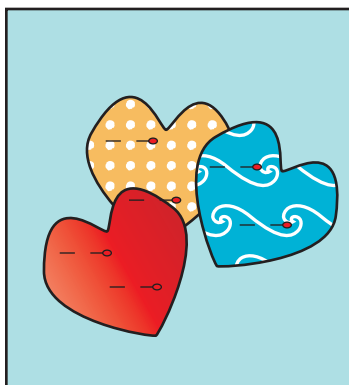
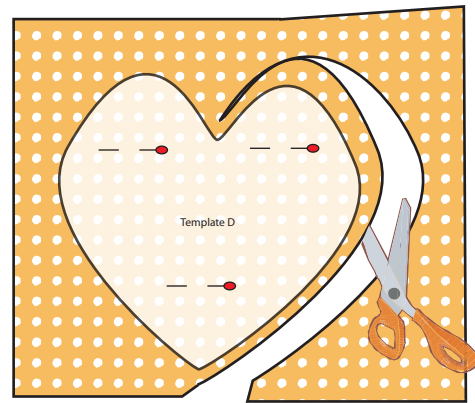


Templates for machine piecing include a seam allowance and templates for hand piecing do not.

Templates for appliqué don't include a seam allowance unless noted.

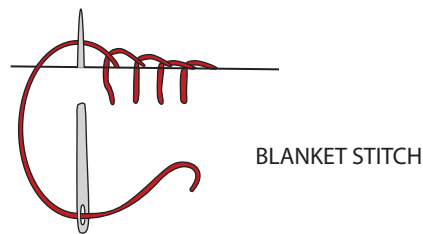
Appliqué pieces can be applied to the background by hand or by machine.

With the needle-turn method, trace the pieces on the right side of the fabric and cut on the line. Add an 1/8" seam if the pattern does not include an allowance.



Secure the pieces with a pin to the background fabric and stitch them in place, sewing the underneath pieces first. When hand-stitching, use your needle to turn the seam allowance under as you stitch. Raw edges do not need to be turned under when covered by another appliqué piece.

When stitching by machine, use a blanket or blind hemstitch along the turned-under edge.



For fusible appliqué, follow the manufacturer's instructions to prepare to fuse the pieces in place. For many fusible products, the asymmetrical templates will need to be flipped, right side down, before tracing them on the paper side of the web. Use a blanket or satin stitch to finish the edges.