

Tea Party Tablerunner & Pillow

“Tea Party” quilt patterned in
Aug/Sept 2008 issue of QUILT Magazine



(16" pillow with flange)



(14-1/2" x 42" tablerunner)

Web Bonus pattern for tablerunner and pillow by Karen DuMont
from the Friends and Flowers collection by Mary Engelbreit for Moda, www.unitednotions.com

Tablerunner

Materials You Will Need:

- 4-5 fat quarters of various prints for blocks and appliqués
- 1/2 yard of a white background fabric
- 1/4 yard of a dark print for binding
- 5/8 yard of a backing fabric
- 18" x 46" piece of batting
- fusible web

Cutting Directions:

For each block, cut from the various prints:

- (4) 2-1/2" squares for the corners
- (2) 2-1/2" squares of a light print for the center four-patch
- (2) 2-1/2" squares of a dark print for the center four-patch
- (4) 2-1/2" x 6-1/2" rectangles
- (2) 4-1/2" squares, then cut in half diagonally once to make (4) small triangles
- Appliqués (see instructions below)

From the white background fabric, cut:

- (1) 15-3/8" squares, then cut in half diagonally twice to make (4) setting triangles
- (2) 8" squares, then cut in half diagonally once to make (4) corner triangles

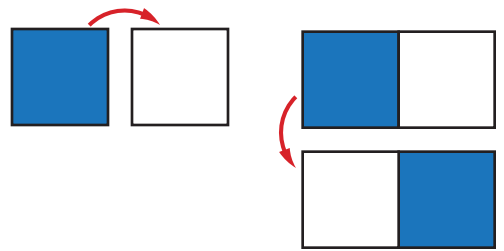
From the dark print for binding, cut:

- (2) 2-1/4" x 42" strips

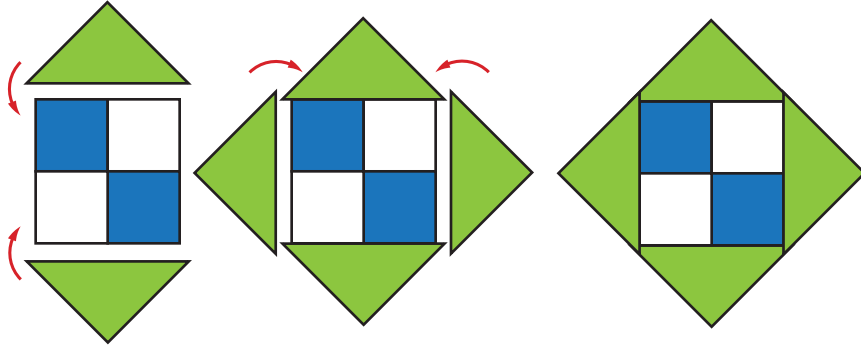
Sewing Directions: *(Seam allowance is 1/4" unless stated otherwise)*

MAKING A BLOCK

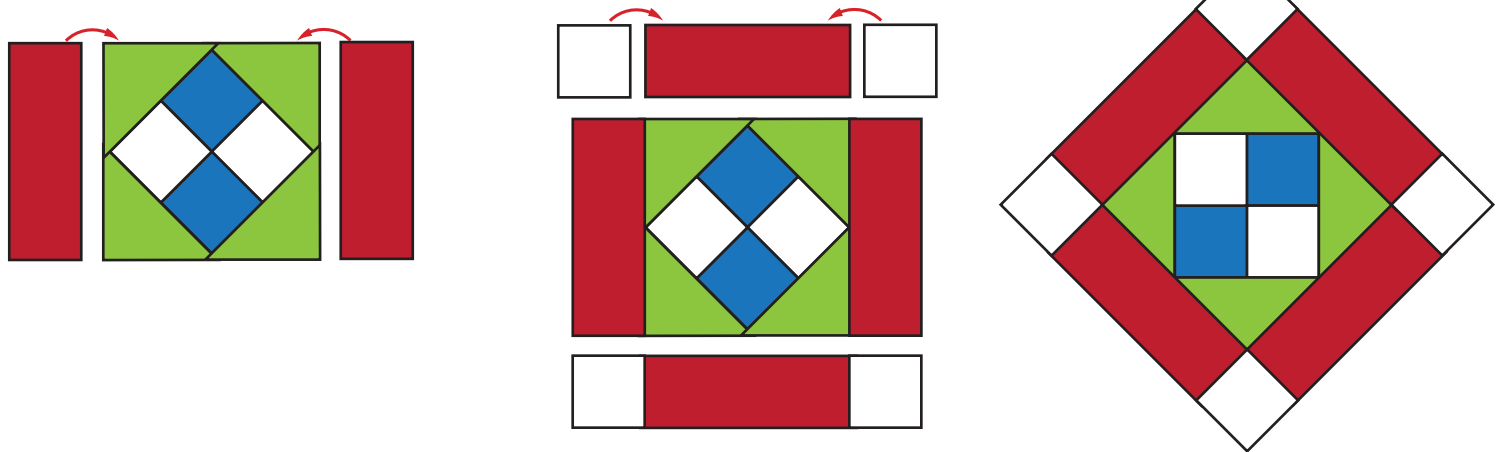
1. Sew (1) 2-1/2" dark print square to (1) 2-1/2" light print square to make a two-patch unit. (Make 2) Stitch (2) two-patch units together, as shown, to make the center four-patch unit.



2. Sew (2) small triangles to opposite sides of the four-patch unit. Sew (2) more small triangles to the remaining opposite sides of the four-patch unit.

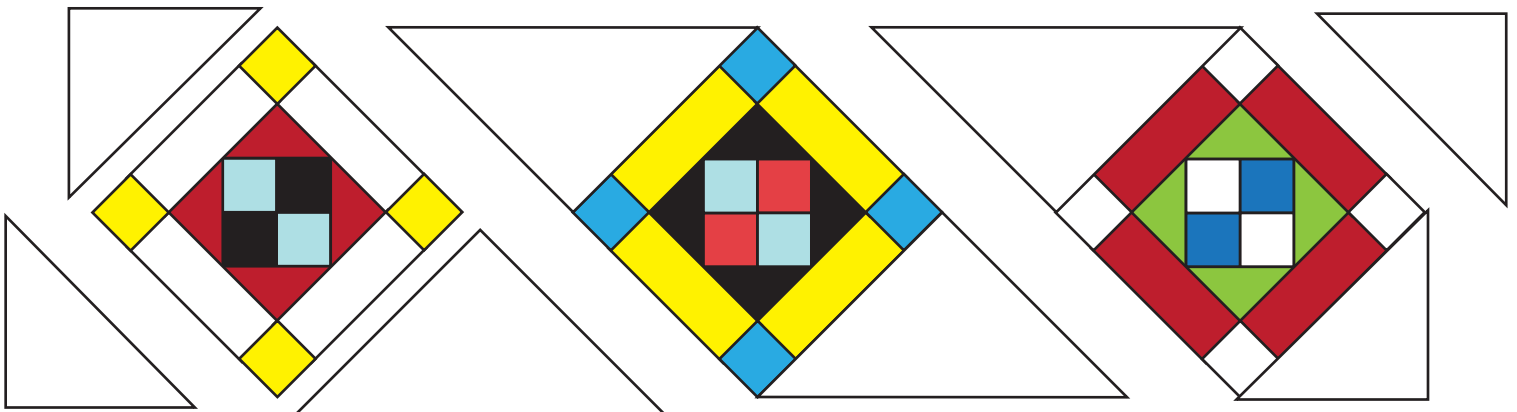


3. Sew (2) 2-1/2" x 6-1/2" rectangles to opposite sides of the four-patch center. Sew (2) 2-1/2" squares to each end of the remaining 2-1/2" x 6-1/2" rectangles to make a long strip. (Make 2) Sew the long strips to the top and bottom of the four-patch center to complete the block. (Make 3 blocks)



ASSEMBLING THE TABLERUNNER

4. Using (4) setting triangles, (4) corner triangles, and (3) blocks, lay out the table runner in diagonal rows. Join the units together in each row. Join the rows.



ADDING THE APPLIQUES

(Note: Templates and instructions are given using the fusible appliqué method. For needle-turn method add seam allowance to templates.)

5. Trace the templates A-F onto the paper side of the fusible web. You will need to trace (2) of Template A, (6) of Template B, (4) of Template C, (16) of Template D, (2) of Template E, and (2) of Template F leaving at least 1/2" space between each piece. Cut out the pieces 1/4" beyond the drawn lines.

Following manufacturer's directions, iron the pieces to the wrong side of the appropriate fabric needed for each appliqué. Cut out each piece on the drawn line.

6. Refer to tablerunner photo; fuse each appliqué to the tablerunner, as shown. Stitch in place using a satin stitch or blanket stitch.

QUILTING AND FINISHING

7. Layer the backing, batting and top. Quilt as desired. Cut the corners in a curve, if desired. Use the (2) 2-1/4" x 42" dark print strips to bind the table runner.

Pillow

Materials You Will Need:

- Scraps or (6) fat eighths of various medium to dark prints for block and appliques
- 9" square of a white background fabric
- 1 yard of a dark print for flange and back
- Scrap of fusible web
- 16" pillow form

Cutting Directions:

- For the block, cut from the various prints:
- (4) 2-1/2" squares for the corners
 - (4) 2-1/2" x 8-1/2" rectangles
 - (2) 2-1/2" x 12-1/2" rectangles
 - (2) 2-1/2" x 16-1/2" rectangles
 - Appliqués (see instructions below)

- From the white background fabric, cut:
- (1) 8-1/2" square

- From the dark print for flange and back, cut:
- (2) 2-1/2" x 16-1/2" rectangles
 - (2) 2-1/2" x 20-1/2" rectangles
 - (2) 15-1/2" x 20-1/2" rectangles



Sewing Directions: *(Seam allowance is 1/4" unless stated otherwise)*

APPLIQUE THE BLOCK CENTER

(Note: Templates and instructions are given using the fusible appliqué method. For needle-turn method add seam allowance to templates.)

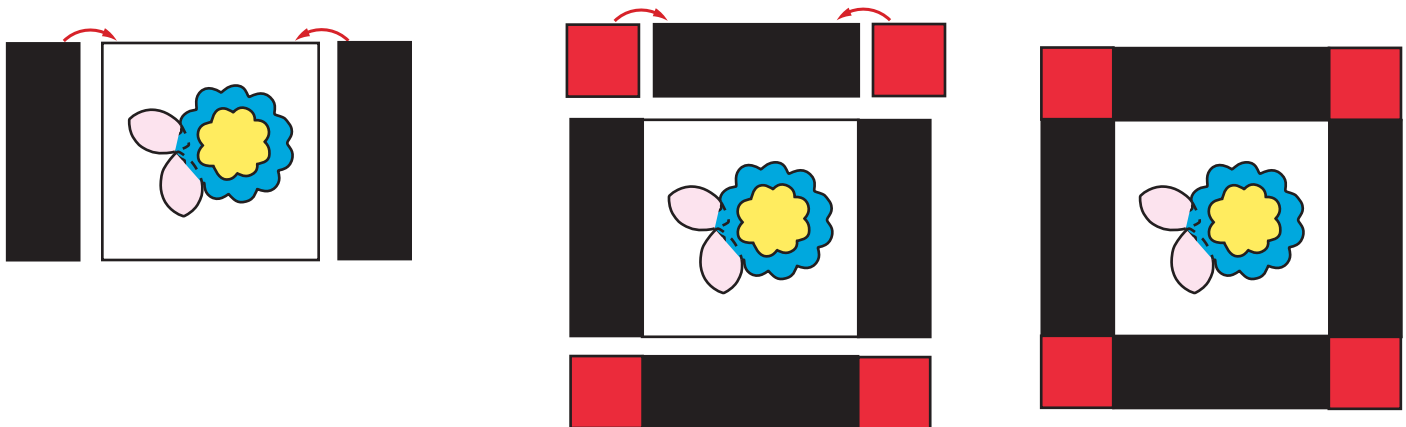
1. Trace the templates C, D, & E onto the paper side of the fusible web. You will need to trace (1) of Templates C and E, and (2) of Template D leaving at least 1/2" space between each piece. Cut out the pieces 1/4" beyond the drawn lines.

Following manufacturer's directions, iron the pieces to the wrong side of the appropriate fabric needed for each appliqué. Cut out each piece on the drawn line.

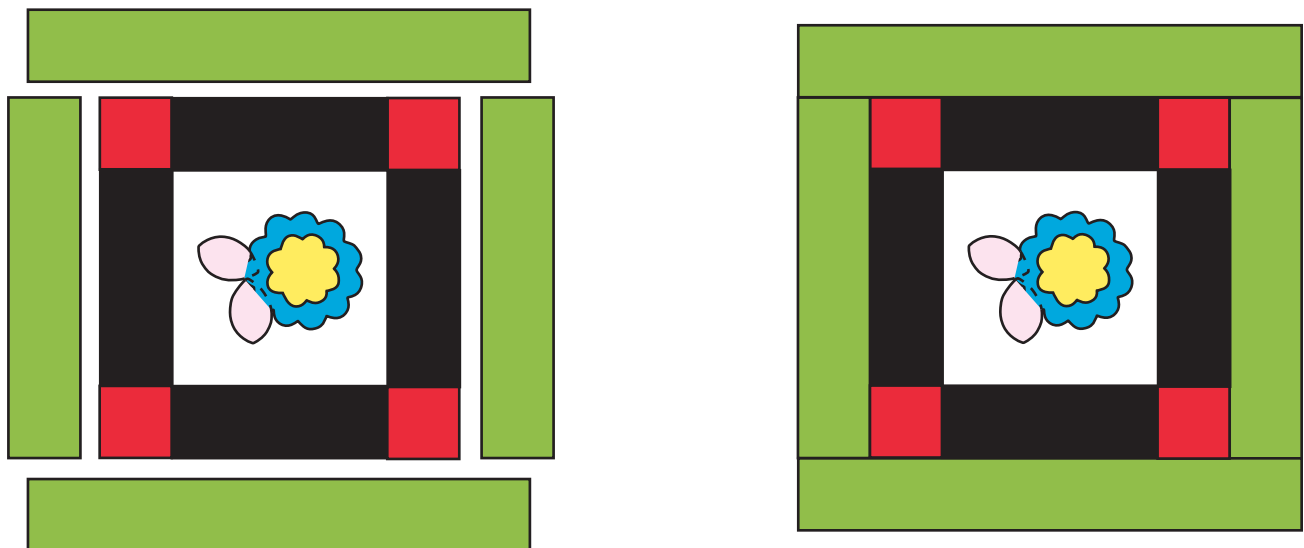
2. Refer to pillow photo; fuse the appliqués to the 8-1/2" white square, as shown. Stitch appliqués in place using a satin stitch or blanket stitch.

ASSEMBLE THE BLOCK

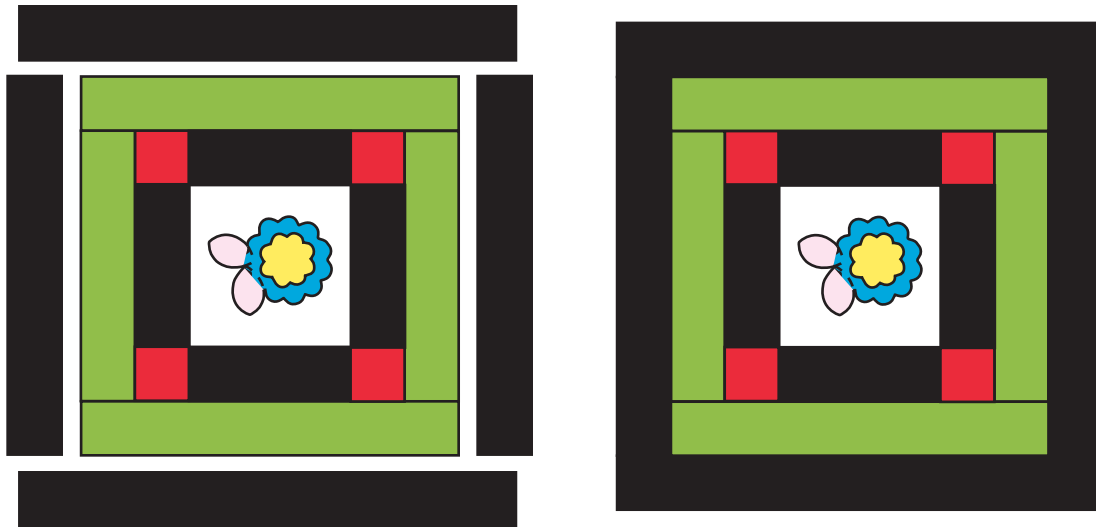
3. Sew (2) 2-1/2" x 8-1/2" rectangles to opposite sides of the appliquéd center. Sew (2) 2-1/2" squares to each end of the remaining 2-1/2" x 8-1/2" rectangles to make a long strip. (Make 2) Sew the long strips to the top and bottom of the appliquéd center to complete the block.



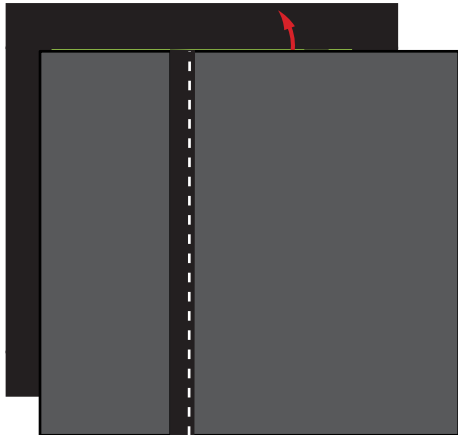
4. Sew (2) 2-1/2" x 12-1/2" rectangles to opposite sides of the appliquéd center. Sew (2) 2-1/2" x 16-1/2" rectangles to the remaining sides of the appliquéd center.



5. Sew (2) 2-1/2" x 16-1/2" dark rectangles to opposite sides of the appliquéd center. Sew (2) 2-1/2" x 20-1/2" dark rectangles to the remaining sides of the appliquéd center to complete the pillow front.



6. Press under 1/4" on one long side of a 15-1/2" x 20-1/2" dark print rectangle. Press the same edge under again 1/2". Topstitch to hem. (Make 2)



6. Overlap the hemmed edges of the two backing pieces to fit the back side of the pillow top. With right sides together, sew the back to the pillow front around all four sides. Turn right side out through hemmed opening.

7. Stitch in the ditch through all layers between the last two borders of the pillow front to form the pillow flange. Insert the pillow form.

Sweet Caroline Templates
(all templates shown at 100%)

