

Tulip Thyme Pillows

“Tulip Thyme” quilt patterned in
April/May 2008 issue of QUILT Magazine

Web Bonus pattern for pillows
by Cheryl Haynes

from the Winsome collection by Nancy Halvorsen for
Benartex Fabrics, www.benartex.com)

Instructions and materials are
given for the basket and heart
pillow. Templates for the appliqués
are given for both pillows.



(14" square plus ruffle)

Materials You Will Need:

1/2 yard of a center background fabric
Fat eighth of a fabric for border one
Fat eighth of a fabric for border two
1/2 yard of a ruffle fabric
14" pillow form

Cutting Directions:

From the center background fabric, cut:

- (1) 8-1/2" square
- (1) 14-1/2" square

From the fabric for border one, cut:

- (2) 1-1/2" x 8-1/2" strips
- (2) 1-1/2" x 10-1/2" strips

From the fabric for border two, cut:

- (2) 2-1/2" x 10-1/2" strips
- (2) 2-1/2" x 14-1/2" strips

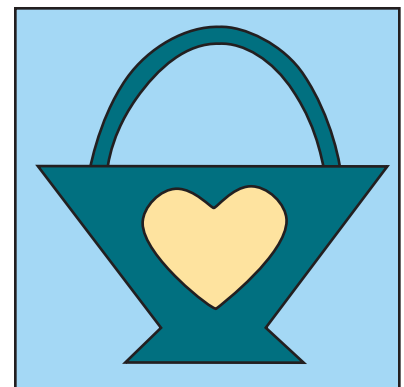
From the ruffle fabric, cut:

- (3) 5" x 42" strips

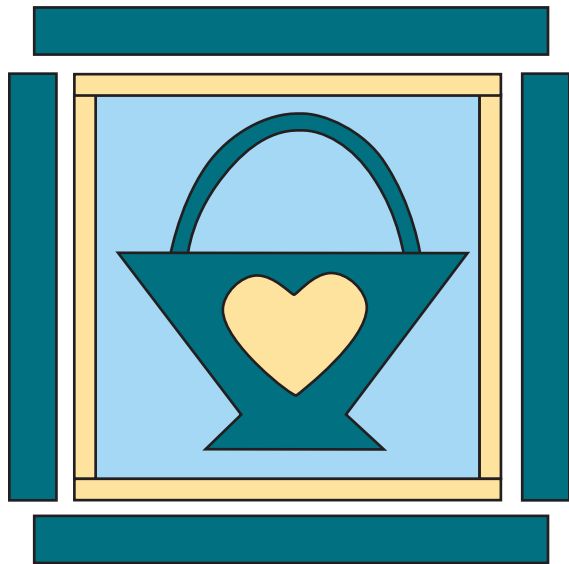
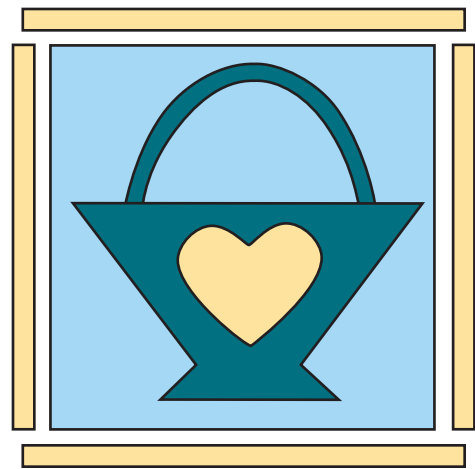
Sewing Directions:

(Seam allowance is 1/4" unless stated otherwise)

1. Appliqué the basket and heart to the center background square using your favorite appliqué technique.

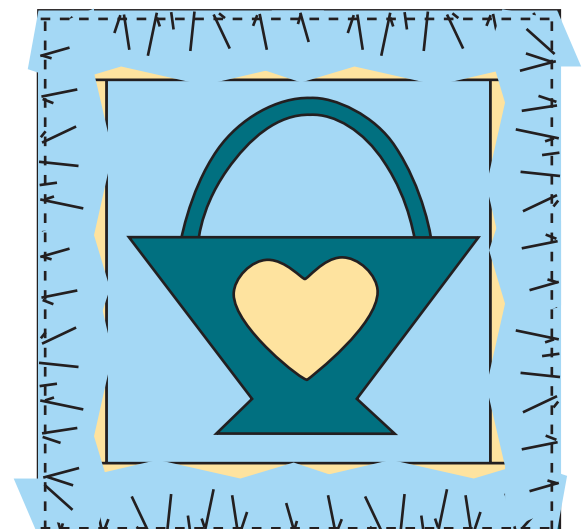
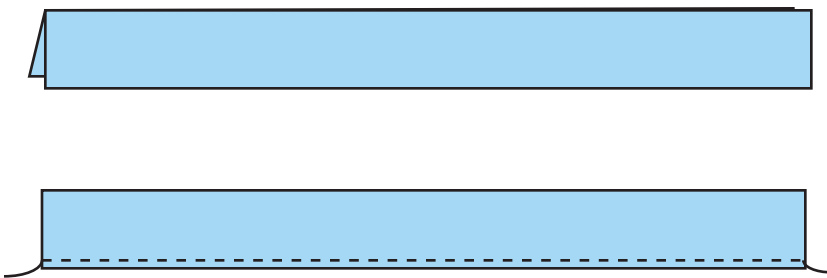


2. Sew the 1-1/2" x 8-1/2" border one strips to the sides of the center appliquéd square.
3. Sew the 1-1/2" x 10-1/2" border one strips to the top and bottom of the center appliquéd square.



4. Sew the 2-1/2" x 10-1/2" border two strips to the sides of the center appliquéd square.
5. Sew the 2-1/2" x 14-1/2" border two strips to the top and bottom of the center appliquéd square.

6. Sew the short ends together of the (3) 5" x 42" ruffle fabric strips to make a long strip. Fold the long strip in half widthwise with wrong sides together and raw edges even. Press. Run a long basting stitch along the raw edge, leaving your string ends long. Gather the strip to equal about 56" in length. Pin the ruffle to the four edges of the pillow. Baste in place to secure.



7. Pin the 14-1/2" backing square, right sides together, on the pillow front. Stitch through all the layers along three sides of the pillow. Turn right side out and press. Do not press the ruffle, however. Insert the pillow form and hand stitch the opening closed.

